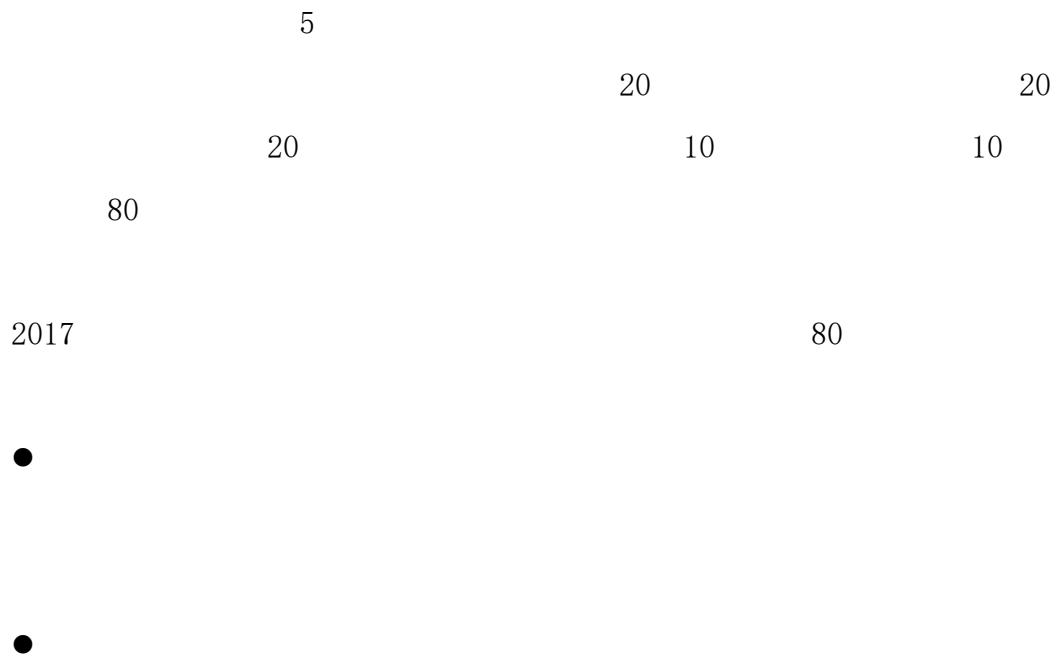


2017

2019 10



		1
		1
1.	1-1	1
2.	1-2	6
3.	1-3	11
4.	1-4	16
5.	1-5	20
6.	1-6	25
7.	1-7	30
8.	1-8	35
9.	1-9	40
10.	1-10	45
11.	1-11	50
12.	1-12	53
13.	1-13	56
14.	1-14	59
15.	1-15	62
16.	1-16	65
17.	1-17	68
18.	1-18	71
19.	1-19	74
20.	1-20	77
		80
		80
1.	2-1	80
2.	2-2	83
3.	2-3	85
4.	2-4	87
5.	2-5	89
6.	2-6	91
7.	2-7	93

8.	2-8	95
9.	2-9	98
10.	2-10	101
11.	2-11	104
12.	2-12	107
13.	2-13	110
14.	2-14	113
15.	2-15	116
16.	2-16	119
17.	2-17	122
18.	2-18	126
19.	2-19	130
20.	2-20	133
		136
1.	3-1	136
2.	3-2	140
3.	3-3	145
4.	3-4	149
5.	3-5	154
6.	3-6	159
7.	3-7	164
8.	3-8	169
9.	3-9	174
10.	3-10	179
11.	3-11	184
12.	3-12	186
13.	3-13	188
14.	3-14	190
15.	3-15	192
16.	3-16	194
17.	3-17	196
18.	3-18	198
19.	3-19	200
20.	3-20	202

		204
		204
1.	4-1	204
2.	4-2	207
3.	4-3	210
4.	4-4	213
5.	4-5	216
6.	4-6	219
7.	4-7	222
8.	4-8	225
9.	4-9	228
10.	4-10	231
		234
1.	5-1	234
2.	5-2	236
3.	5-3	238
4.	5-4	240
5.	5-5	242
6.	5-6	244
7.	5-7	246
8.	5-8	248
9.	5-9	250
10.	5-10	252

1. 1-1

1

33 2100 10 2010
310 1995

1

3 5

1.2

1.2

2003

ABC

1

1

1-1

10		10	6S 0/3/5			
				0/3/5		
90	20			16-20		
				11-15		
				6-10		
				1-5		
				0		
	9			8-9		
				6-7		
				4-5		
				0-3		
		21	/		21	

			/	18	
			/	15	
			/	12	
			/	9	
			/	6	
			/	3	
				0	
		20	15		

			0/3/5	
		20	5 5	
			6 4	
	100			

-

2. 1-2

1

2002

0-16

1

:// . .

4

2

3

3

7

4

10

200

500

120

5

		()	10%	(
	20%	800		80
	30%	112		11.2
	50%	88		8.8

A.

?

B.

2

7 8

0 2010

3

60

4

1-2

1-2

				6S 0/3/5		
	10	10				
			0/3/5			
90		20		16-20		
				11-15		
				6-10		
				1-5		
				0		
		9		8-9		
				6-7		
				4-5		
				0-3		
		21		/	21	

			/	18	
			/	15	
			/	12	
			/	9	
			/	6	
			/	3	
				0	
		20	15		

			0/3/5	
		20	5 5	
			6 4	
	100			

3. 1-3

1
 14
 4 DSR
 1 :// 34091294. /
 14 4
 2 14 14
 3 70
 14
 7
 4 ***
 14 20
 500 14
 1500 14
 350
 5
 14

		()	10% (
	20%	40000	4000
	30%	8000	800
	50%	2000	200

- A. ?
- B.

2

7 8

0 2010

3

60

4

1-3

1-3

6S

0/3/5

10

10

			/	18	
			/	15	
			/	12	
			/	9	
			/	6	
			/	3	
				0	
		20	15		

			0/3/5	
		20	5 5	
			6 4	
	100			

4. 1-4

1 N F 1966

7 DSR

1 :// . .

2 4

3 3000

4 7 ***

4 20

500

1500

350

5

		()	10% (
	20%	4000	400
	30%	800	80
	50%	200	20

- A. ?
- B.

2

7 8

0 2010

3

60

4

1-4

1-4

			6S 0/3/5		
10	10		0/3/5		
90	20			16-20	
				11-15	
				6-10	
				1-5	
				0	
	9				8-9
					6-7
					4-5
					0-3
	21		/		21
			/		18
			/		15

			/	12	
			/	9	
			/	6	
			/	3	
				0	
			15		
		20	0/3/5		
			5	5	
		20	6	4	
	100				

5. 1-5

1

200

DSR

1

:// 71054329. /

4

2

3

7

4

30

5

2

20

15

5

		()	10%	(
	20%	400		40
	30%	80		8
	50%	20		2

A.

?

B.

2

7 8

0 2010

3

60

4

1-5

1-5

				6S 0/3/5		
	10	10				
			0/3/5			
90	20			16-20		
				11-15		
				6-10		
				1-5		
				0		
	9			8-9		
				6-7		
				4-5		
				0-3		
		21		/	21	

			/	18	
			/	15	
			/	12	
			/	9	
			/	6	
			/	3	
				0	
		20	15		

			0/3/5	
		20	5 5	
			6 4	
	100			

6. 1-6

1

DSR

1

:// 36830724. . /

4

2

3

7

4

30

50

2

100

40

5

		()	10%	(
	20%	400		40
	30%	80		8
	50%	20		2

A.

?

B.

2

7 8

0 2010

3

60

4

1-6

1-6

				6S 0/3/5		
	10	10				
			0/3/5			
90		20		16-20		
				11-15		
				6-10		
				1-5		
				0		
		9		8-9		
				6-7		
				4-5		
				0-3		
		21		/	21	

			/	18	
			/	15	
			/	12	
			/	9	
			/	6	
			/	3	
				0	
		20	15		

			0/3/5	
		20	5 5	
			6 4	
	100			

7. 1-7

1

DSR

1

:// . . /

4

2

3

R D

7

4

50

60

2

80

40

5

		()	10%	(
	20%	400		40
	30%	80		8
	50%	20		2

A.

?

B.

2

7 8

0 2010

3

60

4

1-7

1-7

				6S 0/3/5		
	10	10				
			0/3/5			
90		20		16-20		
				11-15		
				6-10		
				1-5		
				0		
		9		8-9		
				6-7		
				4-5		
				0-3		
			21	/	21	

			/	18	
			/	15	
			/	12	
			/	9	
			/	6	
			/	3	
				0	
		20	15		

			0/3/5	
		20	5 5	
			6 4	
	100			

8. 1-8

1

4

DSR

1

://

.

.

/

4

2

3

4 6+128G

7

4

10

50

1

2000

1200

5

		()	10%	(
	20%	8000		800
	30%	1500		150
	50%	500		50

A.

?

B.

2

7 8

0 2010

3

60

4

1-8

1-8

				6S 0/3/5		
	10	10				
			0/3/5			
90		20		16-20		
				11-15		
				6-10		
				1-5		
				0		
		9		8-9		
				6-7		
				4-5		
				0-3		
		21		/	21	

			/	18	
			/	15	
			/	12	
			/	9	
			/	6	
			/	3	
				0	
		20	15		

			0/3/5	
		20	5 5	
			6 4	
	100			

9. 1-9

1

3

DSR

1

:// . . /

4

2

3

5-6

7

4

20

40

3

50

35

5

		()	10%	(
	20%	400		40
	30%	80		8
	50%	20		2

A.

B.

1-9

				6S 0/3/5		
	10	10		0/3/5		
90		20		16-20		
				11-15		
				6-10		
				1-5		
				0		
		9		8-9		
				6-7		
				4-5		
				0-3		
		21		/	21	

			/	18	
			/	15	
			/	12	
			/	9	
			/	6	
			/	3	
				0	
		20	15		

			0/3/5	
		20	5 5	
			6 4	
	100			

10.

1-10

1

5

DSR

1

:// . . /

4

2

3

H -704B

7

4

5

50

1

200

50

5

		()	10%	(
	20%	4000		400
	30%	800		80
	50%	200		20

A.

?

2

7 8

0 2010

3

60

4

1-10

1-10

10		10	6S 0/3/5			
		0/3/5				
90	20			16-20		
				11-15		
				6-10		
				1-5		
				0		
	9			8-9		
				6-7		
				4-5		
				0-3		
		21		/	21	

			/	18	
			/	15	
			/	12	
			/	9	
			/	6	
			/	3	
				0	
		20	15		

			0/3/5	
		20	5 5	
			6 4	
	100			

11.

1-11

1

2

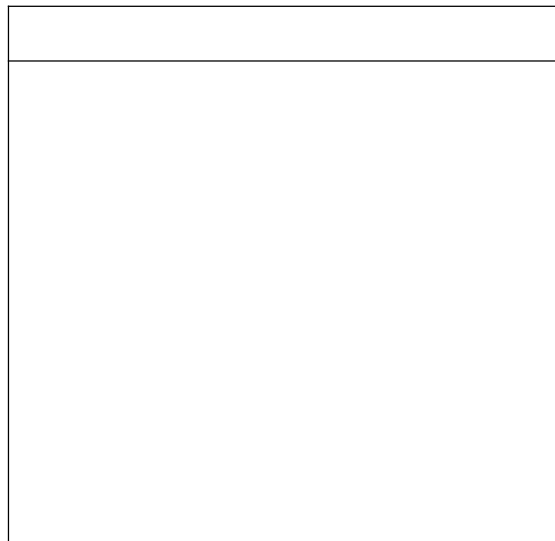
1	
1	
2	
2	
3	
3	
4	
4	
5	
5	

3

3

200

3



2

7 8

0 2010

3

60

4

1-11

10	10	6S	0/3/5
			0/3/5
90	25	5	
		16-20	
	35	11-15	
		6-10	
30	29-35		
	22-28		
	15-21		
	8-14		
		0-7	
		0/3/5	
	18-25		
	10-17		
	0-9		
		100	

12. 1-12

1

2000 4 20

GSM TD-SCDMA 518

2011

500 87

50

30 15

15

1

1 40

1

2

:

7 21 30 15

11 12

11 12

11 12

2

2

1	
1	
2	

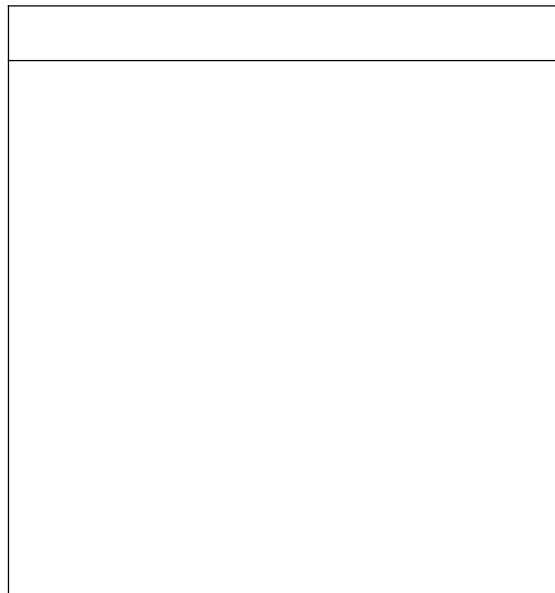
2	
3	
3	
4	
4	
5	
5	

3

3

200

3



2

7

8

0

2010

3

60

4

1-12

1-12

6S

03355

10

10

13. 1-13

1

:// . . /

200

800

6 11

6 6

20

6 10

1145

6 8

6

8

6 10

6 8

1145

1

1

40

1

2

:

6 8

6 10

2

2

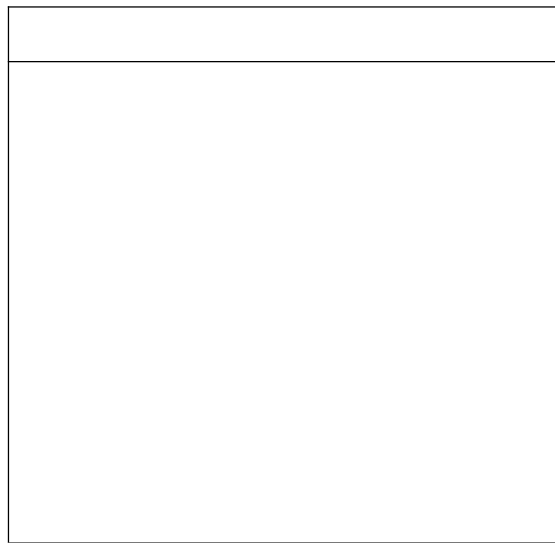
1	
1	
2	
2	
3	
3	
4	
4	
5	
5	

3

3

200

3



2

7 8

0 2010

3

60

4

1-13

10	10	6S	0/3/5
			0/3/5
90	25	5	
		16-20	
		11-15	
		6-10	
		0-5	
90	35	29-35	
		22-28	
		15-21	
		8-14	
		0-7	
		0/3/5	
90	30	18-25	
		10-17	
		0-9	
		100	

14. 1-14

1

4

5 2

5 6

1

1

40

1

2

:

2

2

1	
1	
2	
2	
3	
3	
4	
4	

5	
5	

3

3

200

3

2

7 8

0 2010

3

60

4

1-14

10	10	6S	0/3/5
			0/3/5
90	25	5	
		16-20	
	35	11-15	
		6-10	
30	0-5		
	29-35		
	22-28		
	15-21		
		8-14	
		0-7	
		0/3/5	
		18-25	
		10-17	
		0-9	
		100	

15. 1-15

1

2015 3 17

198

32G U 3 19

U

U

1G

32G

1

1

40

1

2

U

32G U

1G

2

2

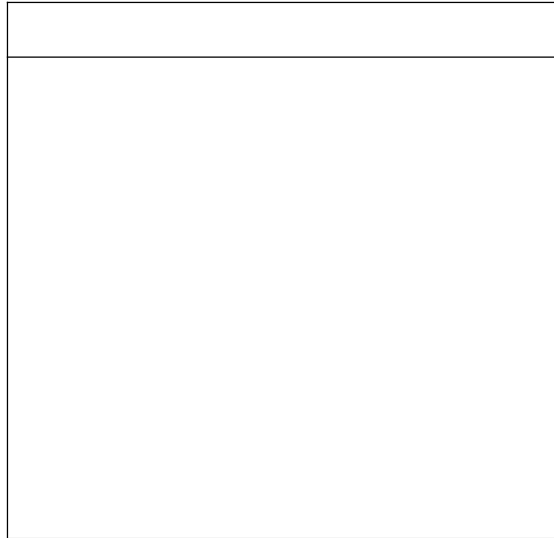
1	
1	
2	
2	
3	
3	
4	
4	
5	
5	

3

3

200

3



2

7

8

0

2010

3

60

4

1-15

1-15

6S

0/3/5

10

10

16. 1-16

1

(:// . . . /)

5

2018 2 6

200

2

1

1

40

1

2

2

2

2

1	
1	
2	
2	
3	
3	
4	

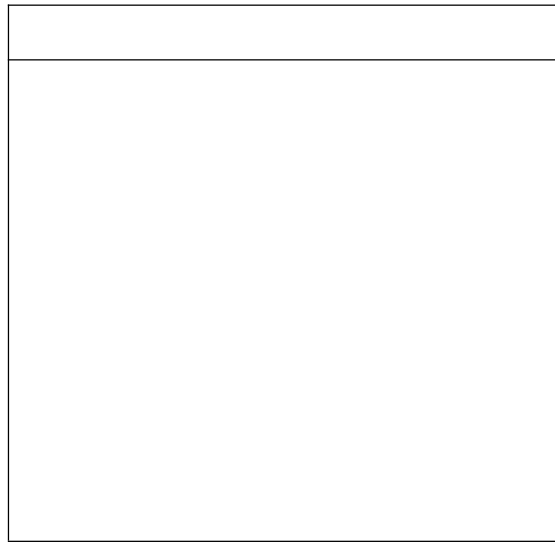
4	
5	
5	

3

3

200

3



2

7

8

0

2010

3

60

4

1-16

1-16

10	10	6S	0/3/5
			0/3/5
90	25	5	
		16-20	
		11-15	
		6-10	
		0-5	
90	35	29-35	
		22-28	
		15-21	
		8-14	
		0-7	
90	30	0/3/5	
		18-25	
		10-17	
		0-9	
		100	

17. 1-17

1

B2C

+

199 /

4

4

199

1

1

40

1

2

2

2

1	
1	
2	
2	
3	
3	
4	
4	

5	
5	

3

3

200

3

2

7

8

0

2010

3

60

4

1-17

10	10	6S	0/3/5
			0/3/5
90	25	5	
		16-20	
	35	11-15	
		6-10	
30	0-5		
	29-35		
	22-28		
	15-21		
		8-14	
		0-7	
		0/3/5	
		18-25	
		10-17	
		0-9	
		100	

18. 1-18

1

1999

17

25000

2003 12

9000

2015 10 26

2015 12 15

2015 12 25

28445467318

(12

25)

()

1

1

40

1

2

12 25

2

2

1	
1	
2	
2	
3	
3	
4	
4	
5	
5	

3

3

200

3

2

7 8 0 2010

3

60

4

1-18

10	10	6S	0/3/5
			0/3/5
90	25	5	
			16-20
	35	11-15	
		6-10	
30	0-5		
		29-35	
		22-28	
		15-21	
		8-14	
		0-7	
		0/3/5	
		18-25	
		10-17	
		0-9	
		100	

19.

1-19

1

100%

150

1000

1

1

40

1

2

150

1

1000

2

2

1	
---	--

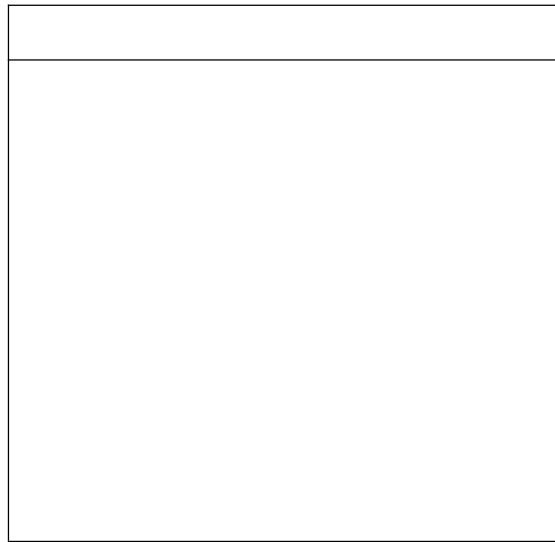
1	
2	
2	
3	
3	
4	
4	
5	
5	

3

3

200

3



2

3

4

7

8

0

2010

60

1-19

1-19

10	10	6S	0/3/5
			0/3/5
	25	5	
		16-20	
90	35	11-15	
		6-10	
		0-5	
	35	29-35	
		22-28	
		15-21	
		8-14	
		0-7	
		0/3/5	
	30	18-25	
		10-17	
		0-9	
		100	

20. 1-20

1

:// . . / 2014 4

0 12

APP 2019 3 2

150

1

1

40

1

2

2016 3 2

150

2

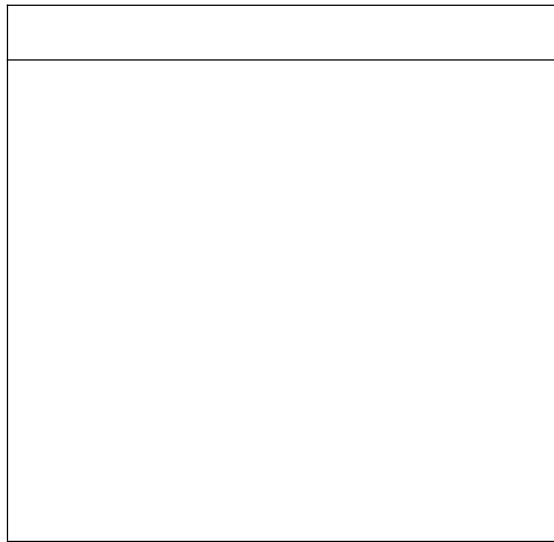
2

1	
---	--

1	
2	
2	
3	
3	
4	
4	
5	
5	

3

3 200
3



2

7 8 0 2010

3

60

4

1-20

1-20

10	10	6S	0/3/5
			0/3/5
90	25	5	
		16-20	
	35	11-15	
		6-10	
30	0-5		
	29-35		
	22-28		
	15-21		
		8-14	
		0-7	
		0/3/5	
	18-25		
	10-17		
	0-9		
	100		

1. 2-1

1
B N

58 /

950 400

. . . 1.
2. 3.

1

. . .

100KB

2

P 7 8 0 20010
3 CS6.0
4 60
(2-1)

2. 2-2

1

1860 /

3

150

30

50

6

1

950

350

.

.

1.

2.

3.

1

.

.

.

100KB

2

7 8

0 2010

P

CS6.0

3

60

4

(2-2)

(2-2)

(10)	10	5	6S PSD
	5	3	2
	10	5	5
	20	10	5
	25	5	5
(90)	10	5	3
	10	5	3
	5	1	2
	5	2	2
	100		

3.

2-3

1

950

400

1

100KB

2

7 8

0 2010

P

CS6.0

3

60

4

(2-3)

(2-3)

4. 2-4

1

+

950 350

1.

2.

1

100KB

2

7 8

0 2010

P

CS6.0

3

60

4

(2-4)

(2-4)

(10)	10	5	6S PSD
	5	3	5 2
	10	5	5
	20	10	5
	25	5	5
(90)	10	5	3
	10	5	3
	5	1	2
	5	2	2
	100		

5. 2-5

1

790

72 /

/

3

3

.PSD

.JPG

2

7 8

0 2010

P

CS6.0

3

60

4

(2-5)

(2-5)

6S

(10)

10

5

PSD

5

15

3

4

3 /

12

(90
)

(2-6)

(10)	10	5 6S PSD	5
(90)	15	3 4	3 /
	12		3 /
	15	1 0-5 2 2 6-10 3 3	3 3 3 11-15
	10	5	3 2
	15		5 5 5
	8	4	0 /2 /3 /4 /5 4
	5		0 /2 /3 /4 /5
	10		2 6
		100	2

2-7

(10)	10	5 6S PSD	5
(90)	15	3 4	3 /
	12		3 /
	15	1 0-5 2 2 6-10 3 3	3 3 3 11-15
	10	5	3 2
	15		5 5 0 /2 /3 /4 /5
	8	4	4
	5		0 /2 /3 /4 /5
	10		2 6
		100	2

8. 2-8

1

L B

1) L

80 80 80 /

L .PSD

.JPG

JPG

150K

2) B

1920 500 100 /

1. 2 .

B

B

B

L

.PSD

.JPG

JPG

150K

3)

2

800 800 72 /

* *

1. 2.

3M

2

7 8 0 2010

P

CS6.0

3

60

4

(2-8)

(2-8)

			6S			5
(10)	10					PSD
				5		
L	18				2	
	4					
		2				
	10				5	
			5			
	4			2		2
B	30					
	4				2	
		2				
	8		5			

(90
)

9. 2-9

1

SK-II

L B
1) L

80 80 80 /

.JPG .PSD
150K JPG

2) B

1920 500 100 /

B

B

B

L

.JPG
150K

.PSD
JPG

3)

800 2 800 72 /

* *

1. JPG

2. JPG

3M

2

7 8

0 2010

P

CS6.0

3

60

4

(2-9)

(2-9)

(10)	10	6S 5 PSD 5	5
L 18			
	4	2	2
	10	5	
	4	2	2
B 30			
	4	2	
	8	5	3
	14	B L 2 3 3 3	
	4	2	2
(90)	42		
	4	2	
	14	2 3 2	
	16	7 2 14 3	
	8	5 8 2 16	
	8	2 2 8	2
	100		

10. 2-10

1

L B

1) L

80 80 80 /

L

. PSD

. JPG

JPG

150K

2) B

950 120 100 /

B

B

B

L

. PSD

. JPG

JPG

150K

3)

2

800 800 72 /

* *

1. JPG

2. JPG

3M

2

7 8 0 2007 P
CS6.0
3
4
60
(2-10)

(2-10)

6S

5

(10) 10

PSD

11. 2-11

1

778

76

B

P

1

P

2

1

K

石头记
www. istone. com

English

首页 产品展示 关于我们 售后服务 联系我们

产品展示

来自韩国

银色小花设计, 高贵而不张扬, 非常适合办公室MM哦! 优质合金镀K金, 可保长久不退色

copyright2011, 版权所有 company.com

1

P

1

2

MM

K

U .

CSS

CSS

12

#CC0000

2

7 8

0 2010

P

CS6.0

D

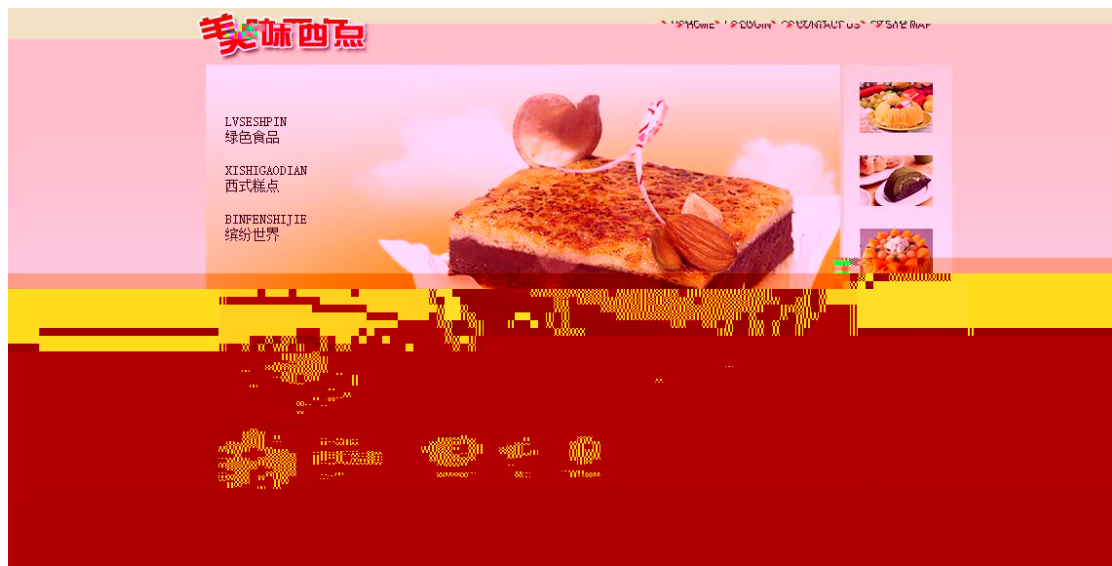
2-11

(10)	10	5	6S
			5
B	12	2	2
		2	4 2
	10	2	5
	10		3
			4
	8	K	2
		2	2
(90)	10	7	3
	15	5	5
		5	
	10		4
CSS	15		5
		5	5
	100		

12. 2-12

1

1



1

1.

1.

1.

1.

1

2.

3.

4.

2.

3.

1

5.

6.

4.

5.

6.

4.

4.

.

1.

3.

4.

4.

LVSEHPIN

ISHIGAODIAN

BINFENSHIJIE

://
B CSS
16 1.5 :
:
K
2
7 8 0 2010
P CS6.0 D CS6
3
60
4
(2-12)

2-12

(10)	10	5	6S
			5
B	10	L	5 5
	8	1	5
		3	
	15		3 9
			3 3
		3	
	10		2 4
			6 0
	10		4 0-6
(90)	10		2 4
			2 5
	17	:	5 :
			5
	10	K	2
			3
		2	3
	100		

13. 2-13

1

M T

200*120

N C S

MITING

1

L



首页

关于我们

公司产品

联系我们



新品上市

护肤系列

彩妆系列



©版权所有 米婷日化公司 QQ客服

1

CSS

CSS

CSS

24

#990000

CSS

1

2

3

150

120

1

10



1

K

2

7 8

0 2010

P

CS6.0

D

CS6


3

60

4

(2-13)

2-13

(10)	10	5	6S
			5
	10	2	2
		2	2
		2	
	15	0-9	9-12
		12-15	
	16	2	2
			2
C	20		3
			3
(90)	5		
			5
	14		3
		3	3
			3
	10	K	2
			3
		2	3
	100		

14. 2-14

1

H S D

LOGO

H S D

: 1. 2. 3.
 4. 12
 173 404

1. 1. 1.
 1. 1. 1.

1.

1 4

2. 3.

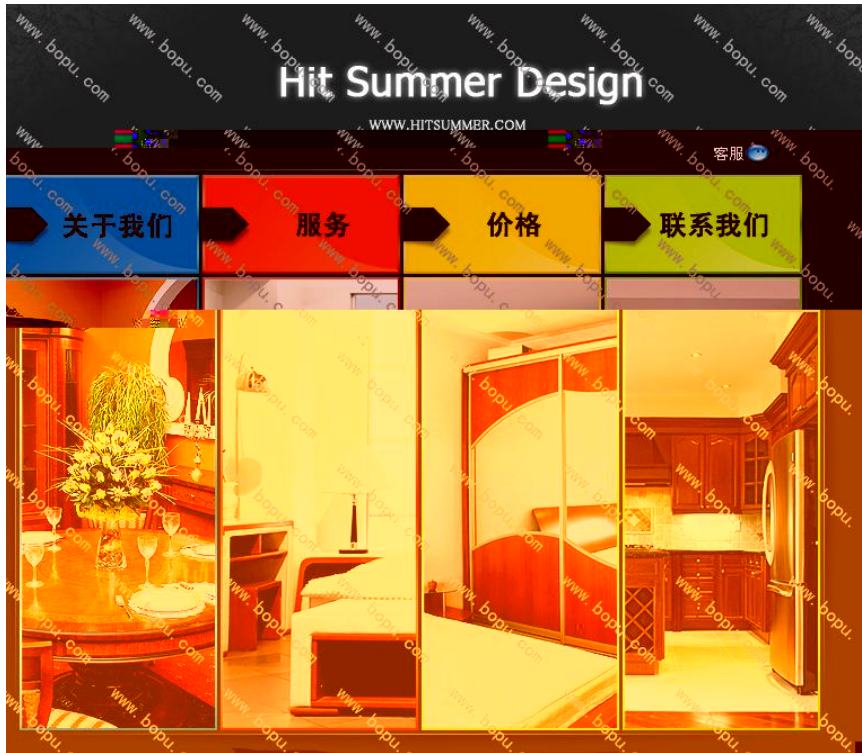
#FF4615

#0887DE

#FDE52A

#B9EE13





1

K

:// . . / :// . . . / :// . . . /

2

7 8 0 2010

P CS6.0 D CS6

3

60

4

(2-14)

2-14

(10)	10	5	6S
			5
L	6	LOGO	0-2 /3-4 /5-6 H S D 0
	12	1	
	18	2	2
	20	0-1 /2-3 /4	4
(90)	14	0-10	2 2
	4	2	2
	8	K	2 2
	8	2	2
	8	2	
	100		

15. 2-15

1

1

1. 2. . .

700 230



1

1

1.

4.

1

2

#FF0000

#FFFFFF

3

4

1

.

#CCCCCC

K

1.

:// . . /

2

7

8

0

2010

P

CS6.0

D

CS6

3

60

4

(2-15)

2-15

(10)	10	5	6S
			5
B	16	2	0 /1-3 /4-5 0/1-3/4-5
			2 0-2 /3-4
	20	1	4 2 0 /1 1 2
	29		0-15 2 2 12
(90)	6	2	2 2
	10		K 2 3 2 3
	9		5 2
	100		



1

2

7 8 0 2010

P CS6.0 D CS6

3

60

4

(2-16)

2-16

(10)	10	6S 0 /3 /5 0 /3 /5	
(9 0)	15	LOGO 2 3 B 2 2 2 3	
	10	2 2 4 2	
	20	5 10 1	
	7	3 4	
	20	2 2 5 0-5	
	8	3 5	
	10	K 3 2 3	2
	100		

17. 2-17

1

SKINFOOD

01.

LOGO

SKINFOOD

A

24

-45

10

01

04.

04

-2.

400

350

01

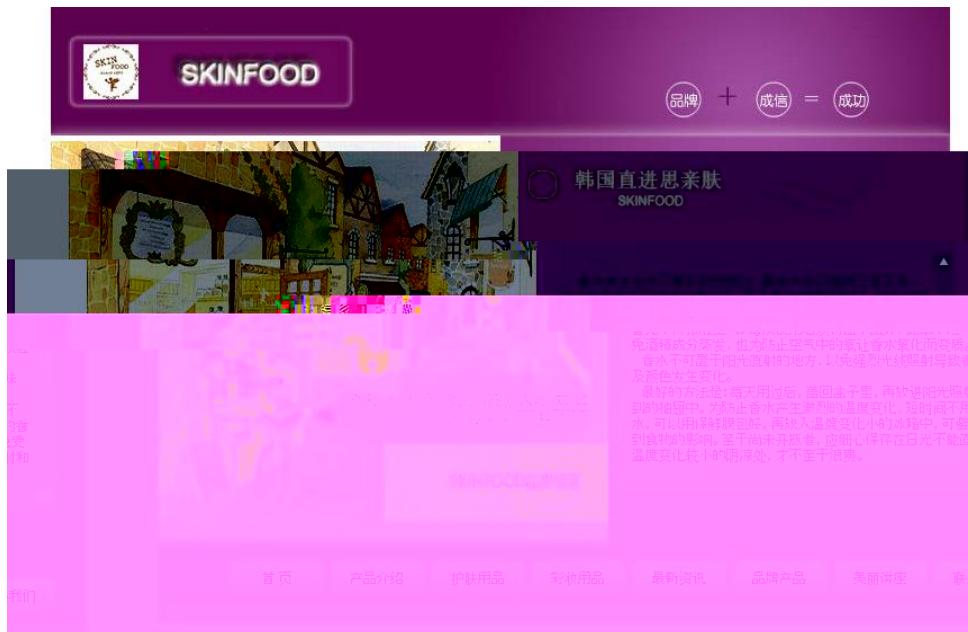
04

01.

04.

-2.

1



1

3.

3.

1000

540

2

1.

2.

490

450

2.

1.

2.

2

DIV

1.

2.

2

1.



1.

2.

1

50

#DBCAAC

#623F23



2

K

2

P

7 8

0 2010

CS6.0

D

CS6

3

60

4

(2-17)

2-17

(10)	10	5	6S
			5
LOGO	13	2	
		3	
		2	2
	9	2	3 2
		2	
	5	3	2
	5	1	3
	12	2	LOGO 5
		3	
(90)		2	
	10		2 1
		3 2	3
	20	5	2 2
		6	
	6	K	1
		2	
		1	2
	10	5	5
	100		

18.

2-18

1

01.

18

01 .

4

-1.

-1.

. /

01 .

4

24.

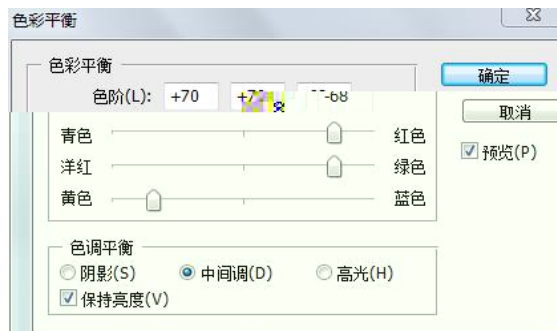
27.

29.

31.

24.

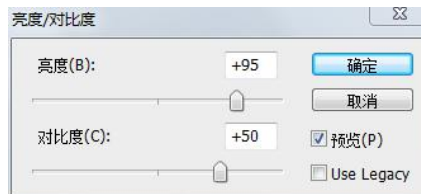
1



1

27.

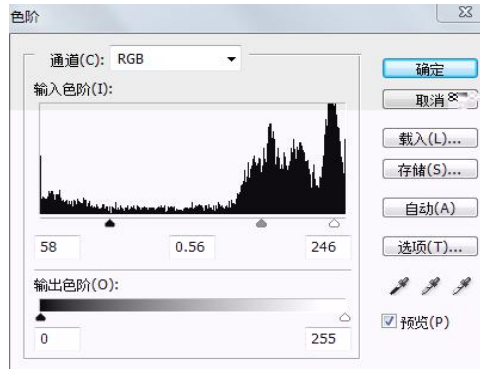
2



2

29.

3



3

29. . 24. 27.
31. 01. .

B

4

12

2

16

2

4



4

K

2

P 7 8 0 2010
CS6.0 D CS6

3

60

4

(2-18)

2-18

(10)	10	5	6S
			5
(90)	L	12	2 3
			2 1
	B	16	4 4
			2 3
		14	2 2
		4	2
		8	2 2
		16	3 10
		12	2 10
	8	K 2	
		2	2
	100		

19.

2-19

1

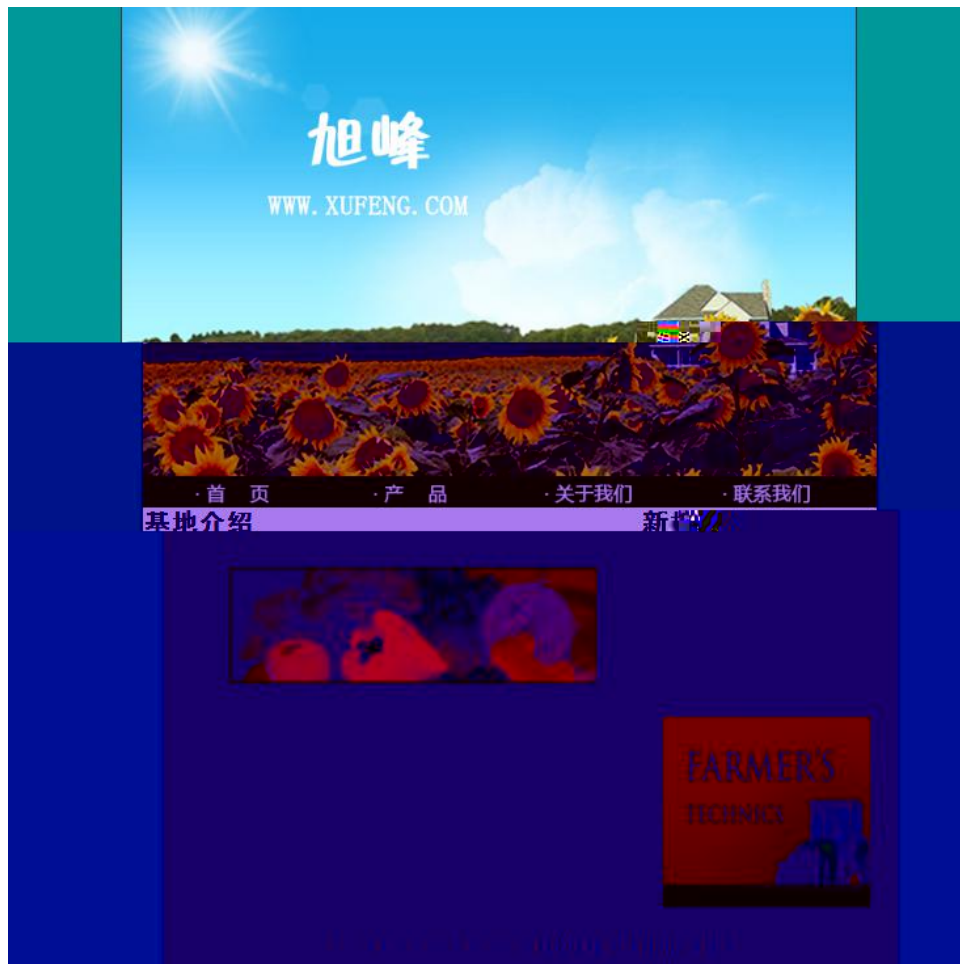
.TTF

1

700*450

350

110



1

2 4

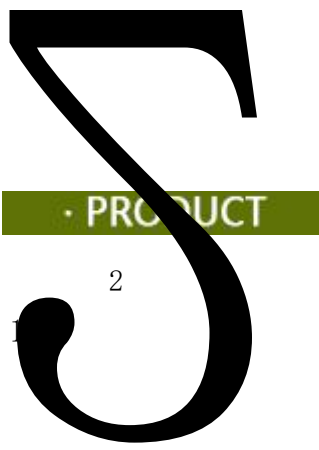
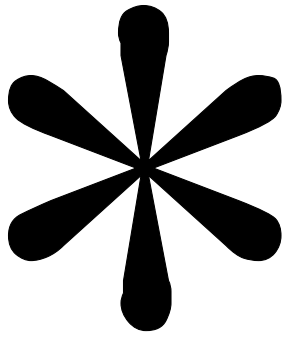
170 30

1.

2.

3.

4.



CSS

CSS

14

1.5

1

14

24

2

#009999

K

2

7 8

0 2010

P

CS6.0

D

CS6

2-19

			6S			
(10)	10	5				
				5		
(90)	B	13	3	2	2	
			2	2	2	
		4	2	2		
		12	3			
		6		1		
		10	5		5	
	CSS	17		5		
			6			
		16	2	2		
		4	2		2	
	8	K		2		
		2	2			
	100					

20.

2-20

1

1- 6 400*300

#000000

#FF0000

B 1 B 2

6 2 3

200*150 1

1 #1E6E87 150 20

#1E6E87 50 20

K



1

2

P 7 8 0 2010
CS6.0 D CS6

3

60

4

(2-20)

2-20

(10)	10	5	6S
			5
	10	3	4
		3	
	18	1	2
	8	2	2
		2	2
	22	5	5 2 3 5
		5	2
(90)	18	3	9
		3	3
	6		3
		3	
	8	K	2
			2
		2	2
	100		

1. 3-1

1
1

200

2

4

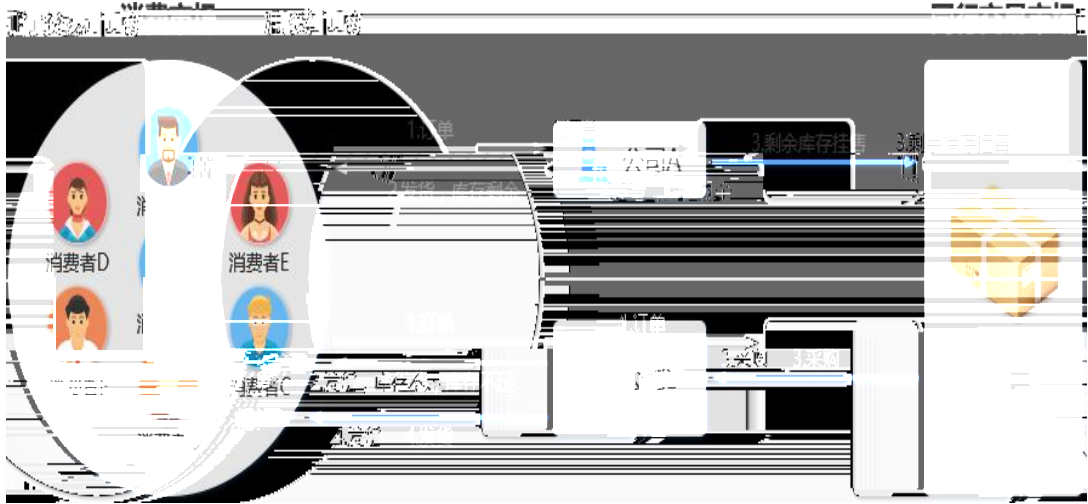
T

T



The screenshot displays a procurement system interface with a list of items and their associated purchase quantity ranges and unit prices. The items are organized into rows, with some items having multiple price points based on quantity. The items listed include 'T恤' (T-shirt) and '牛仔裤' (jeans). The interface includes a search bar at the top left and a navigation bar at the bottom right.

Item Name	Quantity Range	Unit Price
T恤	1-1000件	155元/件
	1001-2000件	150元/件
	2001-3000件	145元/件
	5000件以上	135元/件
牛仔裤	1-1000件	270元/件
	1001-2000件	265元/件
	2001-3000件	260元/件
	3001-4000件	245元/件



5

APP

6

200

1

2

	172. 16. 0. 131/	
		48
	3	
	1	

3

90

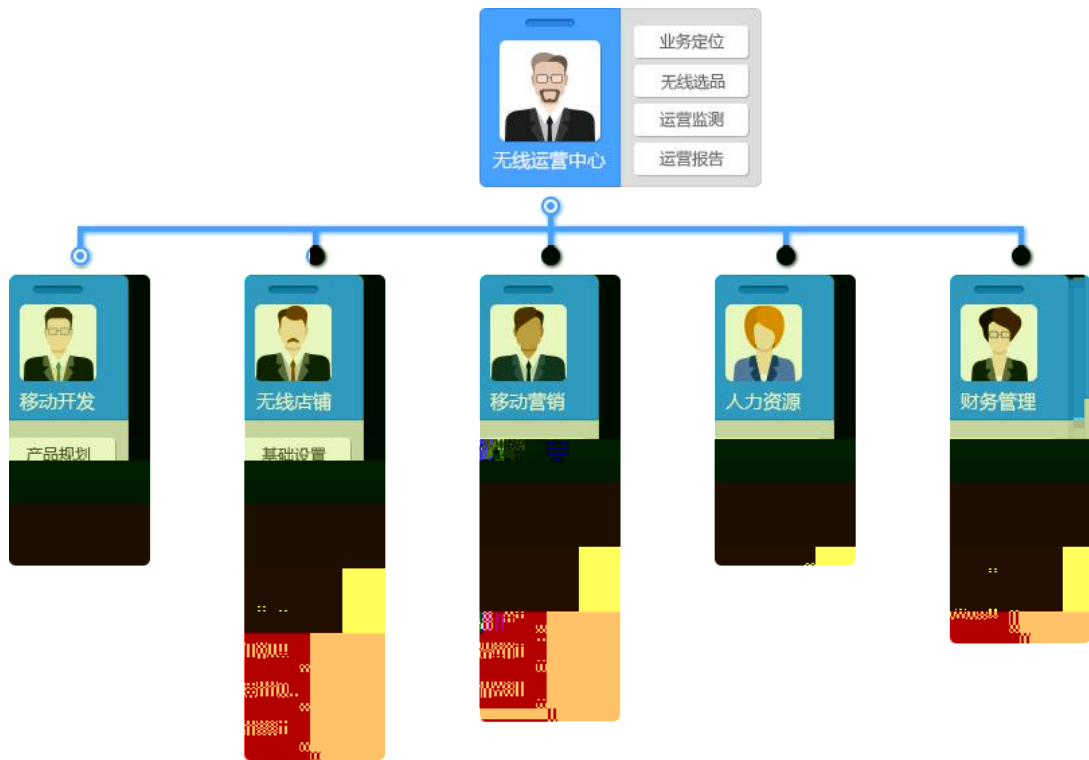
10	10	6S 3 /3 /4	
90	10	A 2 2 2 4	
	10	5 5	
	10	5 2 3	
	APP	5 10	
	15	5 10	
	10	5 5	
	10	5 3 2	
	10	5 5	
	100		

2.

3-2

1
1

200




2

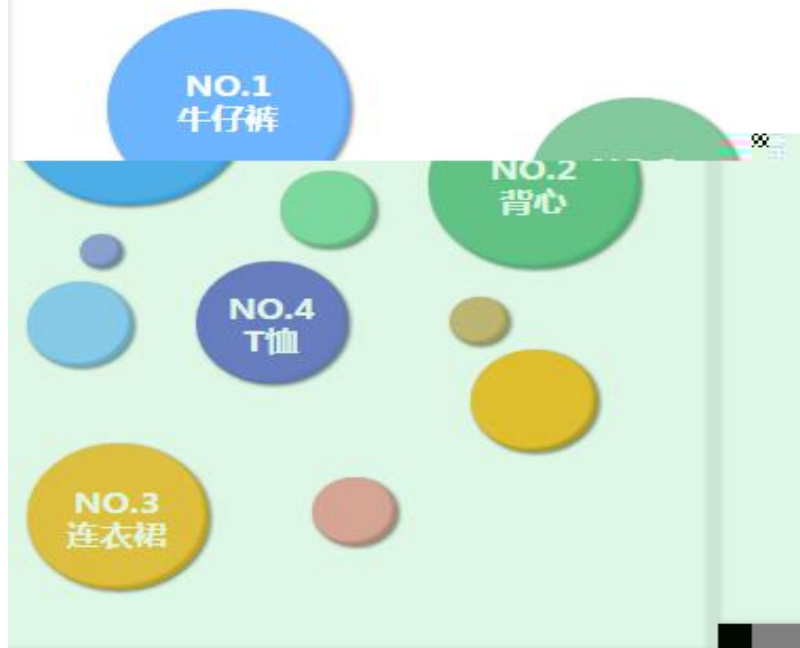
4

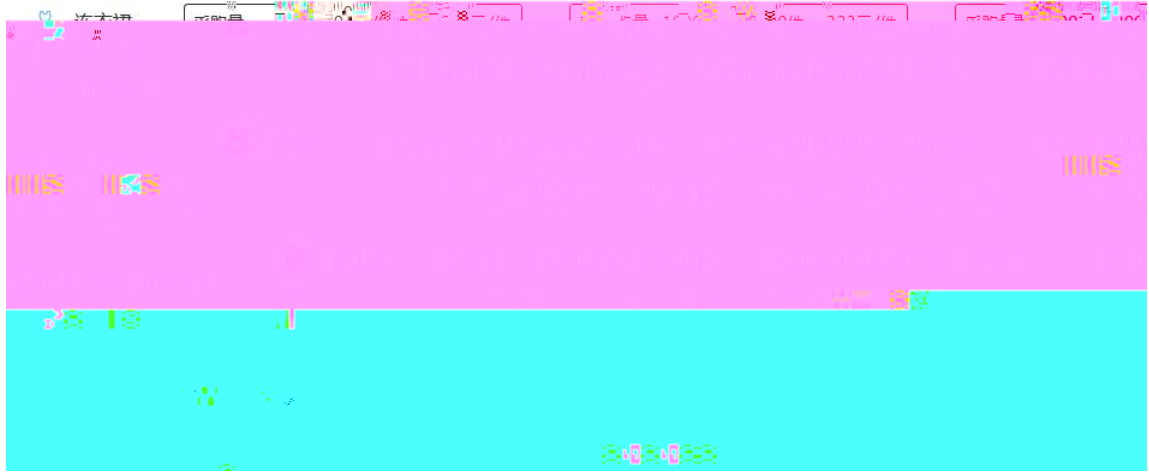
T

T

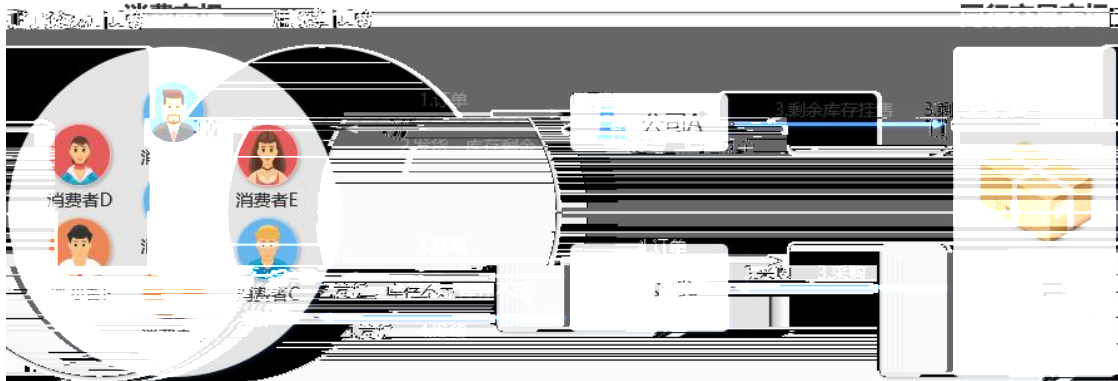
选品参考数据：市场交易热度

 圈越大表示该品类商品越热销





4)



5

APP

6

200

3-2

10	10	6S 3 /3 /4	
90			
		10	A 2 2 2 4
		10	5 5
		10	5 2 3
	APP	15	5 10
		15	5 10
		10	5 5
		10	5 3 2
		10	5 5
		100	

3.

3-3

1
1

200

2

4

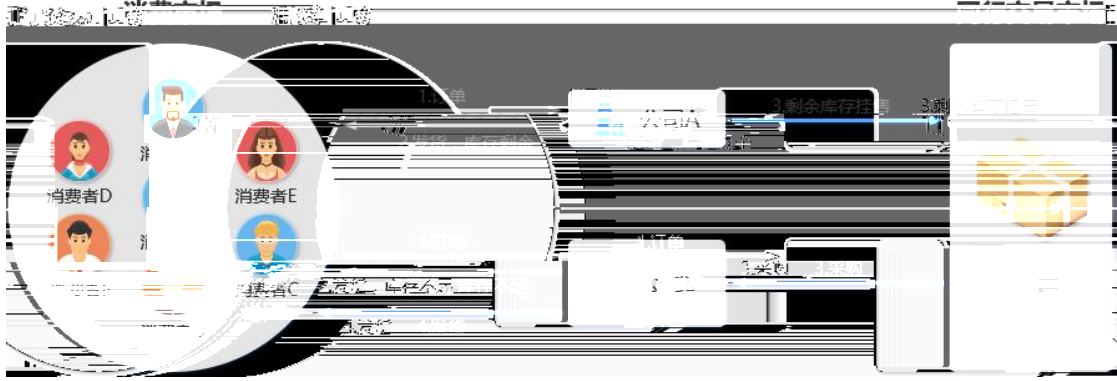


3

The screenshot displays a procurement system interface with a list of items and their corresponding pricing tiers. The items are categorized by icons: a briefcase for '电脑包' (laptop bag), a gift box for '女包' (women's bag), and a suitcase for '旅行箱' (travel bag). Each item has a table of pricing tiers based on quantity.

Item Name	Icon	Quantity Range	Price per Unit
电脑包	Briefcase	1-1000个	100元/个
		1001-2000个	95元/个
		3001-4000个	85元/个
		4001-5000个	80元/个
女包	Gift Box	1-1000个	300元/个
		1001-2000个	295元/个
		2001-3000个	290元/个
		3000个以上	75元/个
旅行箱	Suitcase	1-1000个	500元/个
		1001-2000个	495元/个
		3001-4000个	490元/个
		4001-5000个	485元/个

4



5

APP

6

200

1

2

	172.16.0.131/	
		48
	3	
	1	

3

90

4

3-3

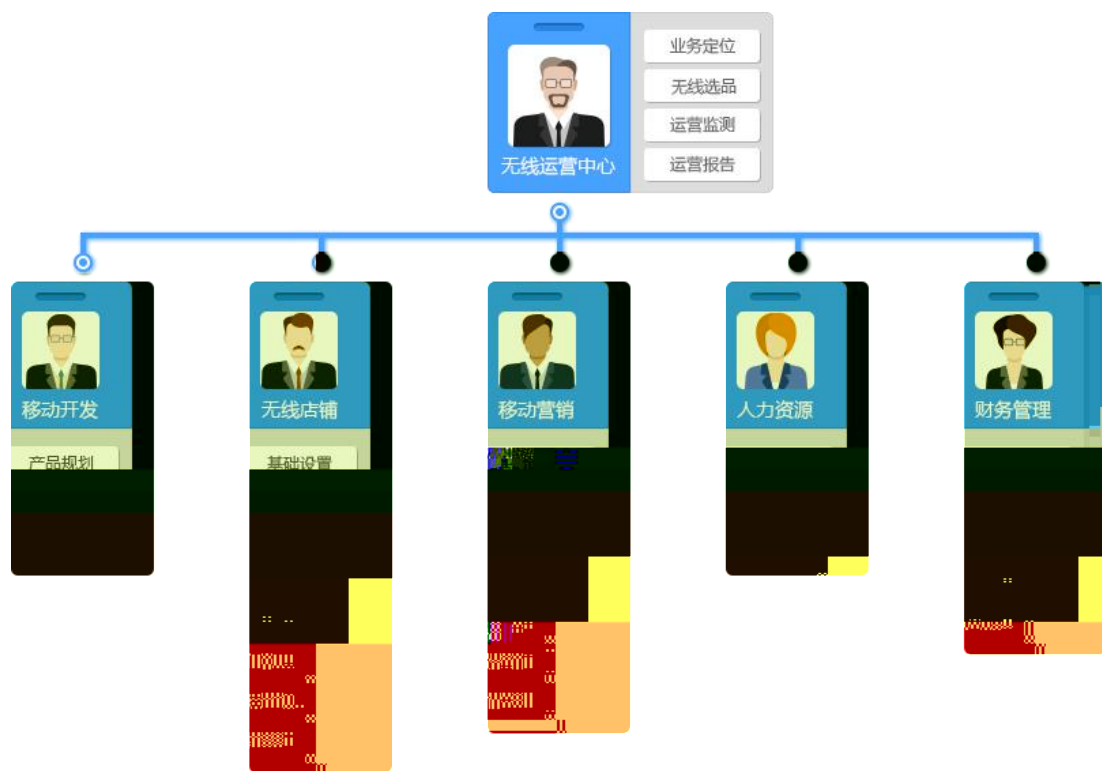
3-3

10	10	6S 3 /3 /4	
90			
		10	A 2 2 2 4
		10	5 5
		10	5 2 3
	APP	15	5 10
		15	5 10
		10	5 5
		10	5 3 2
		10	5 5
		100	

4. 3-4

1
1

200



2

4

选品参考数据：市场交易热度

 圈越大表示该品类商品越热销





4

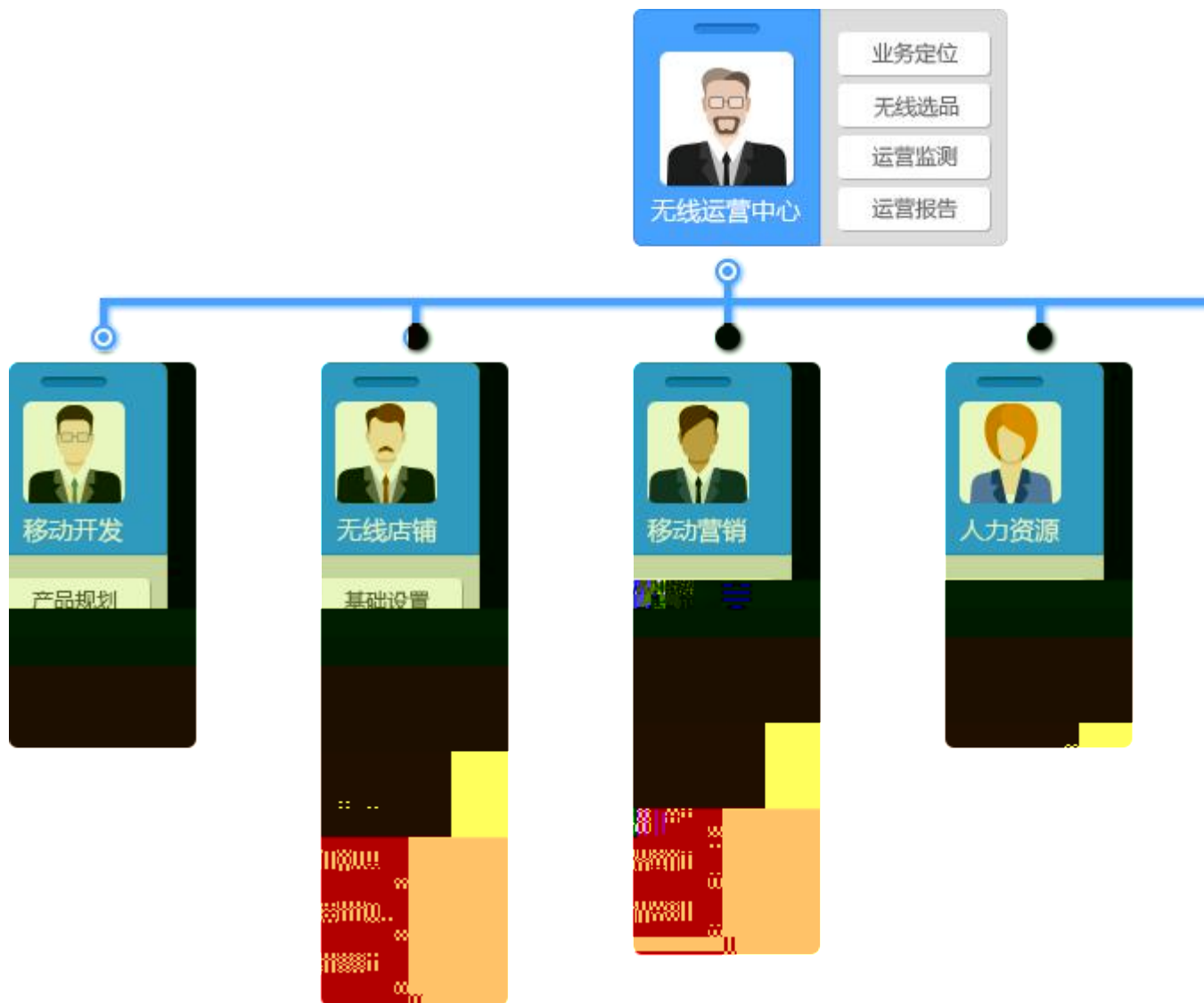
3-4

10	10	6S 3 /3 /4		
90	10	A	2 2 2 4	
		10	5	
			5	
	10	5		
		2		
		3		
	APP	15	5 10	
		15	5 10	
		10	5 5	
		10	5 3 2	
	10	5 5		
	100			

5. 3-5

1
1

200

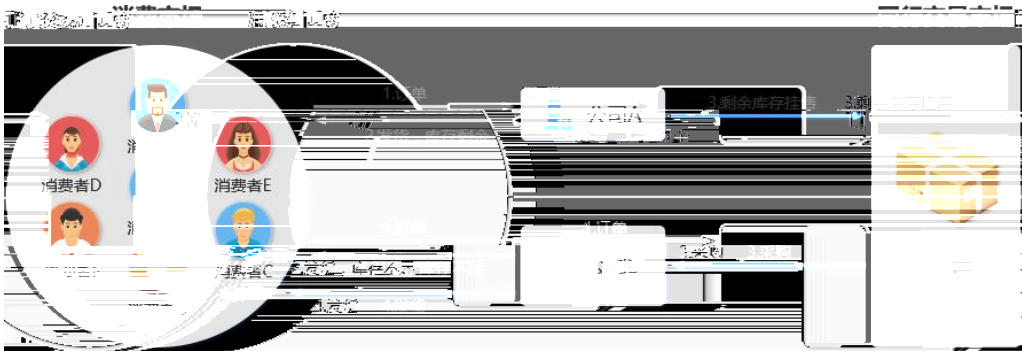


2





4



5

APP

6

200

2

	172. 16. 0. 131/	
		48
	3 1	

3

90

4

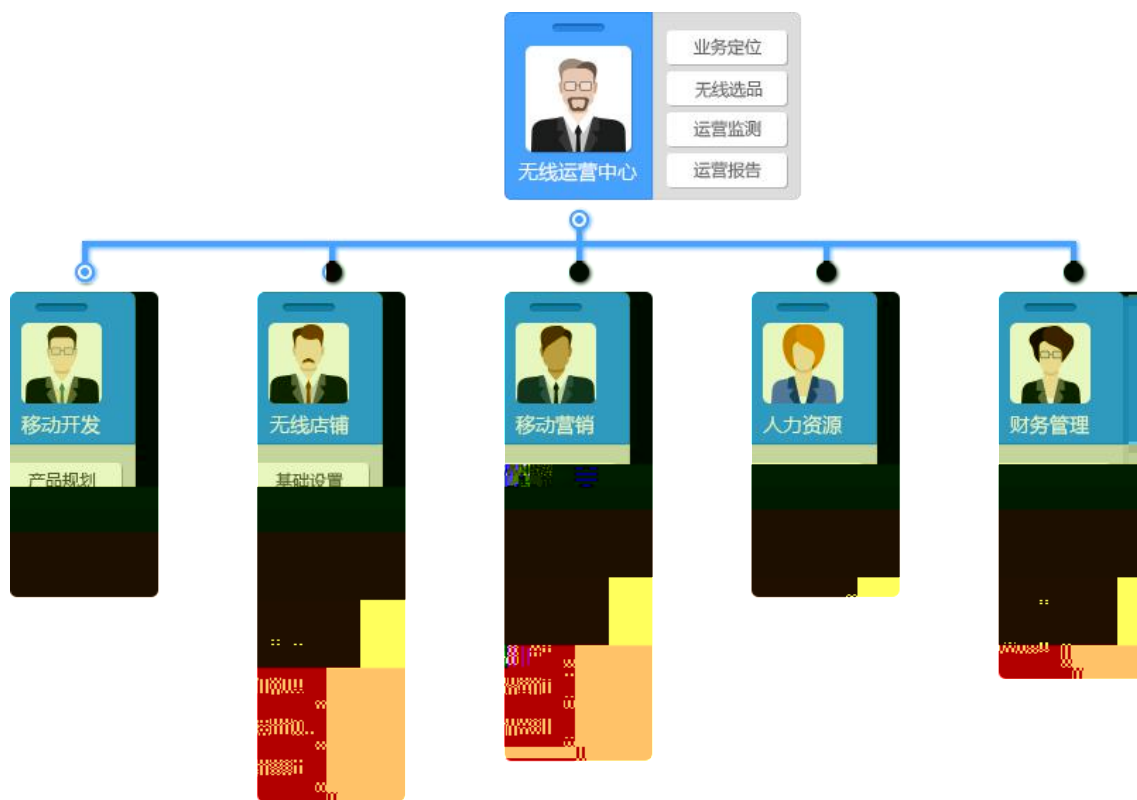
3-5

10	10	6S 3 /3 /4	
90			
		10	A 2 2 2 4
		10	5 5
		10	5 2 3
	APP	15	5 10
		15	5 10
		10	5 5
		10	5 3 2
		10	5 5
		100	

6. 3-6

1
1

200



2

4

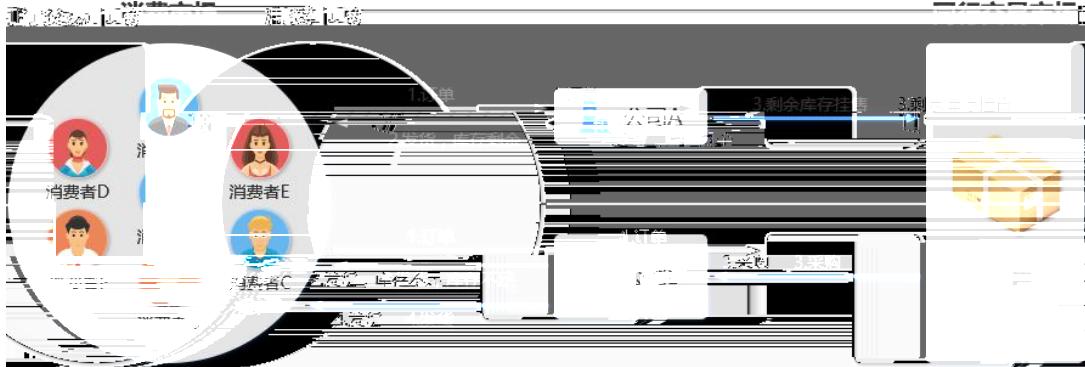
选品参考数据：市场交易热度

圈越大表示该品类商品越热销





4



5

APP

6

200

1

2

	172.16.0.131/	
		48
		3
		1

3

90

4

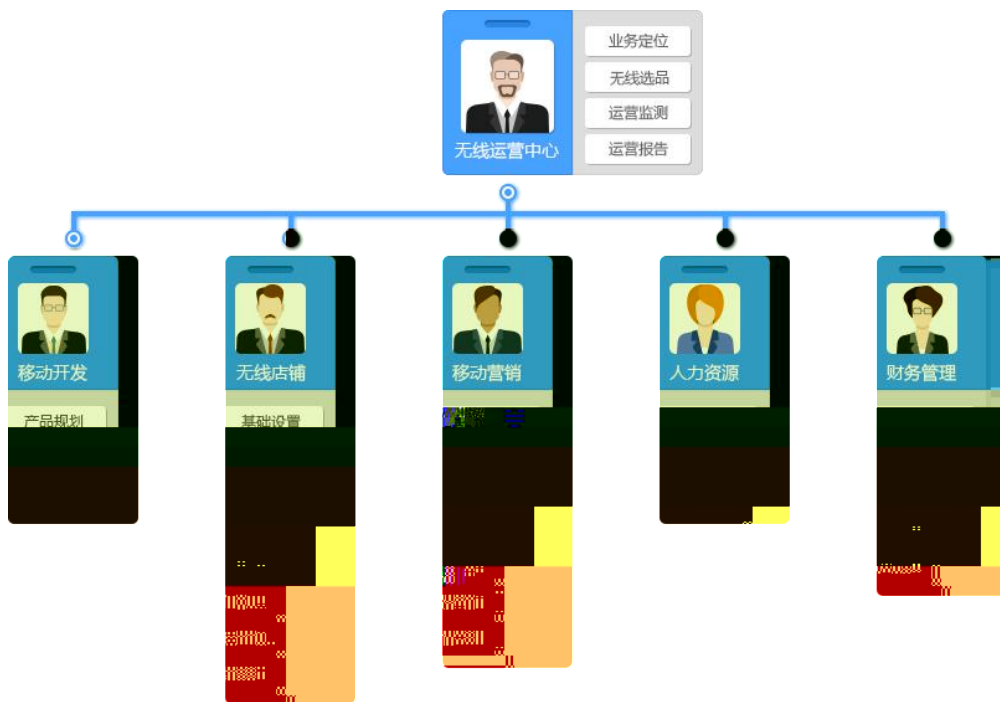
3-6

3-6

7. 3-7

1
1

200



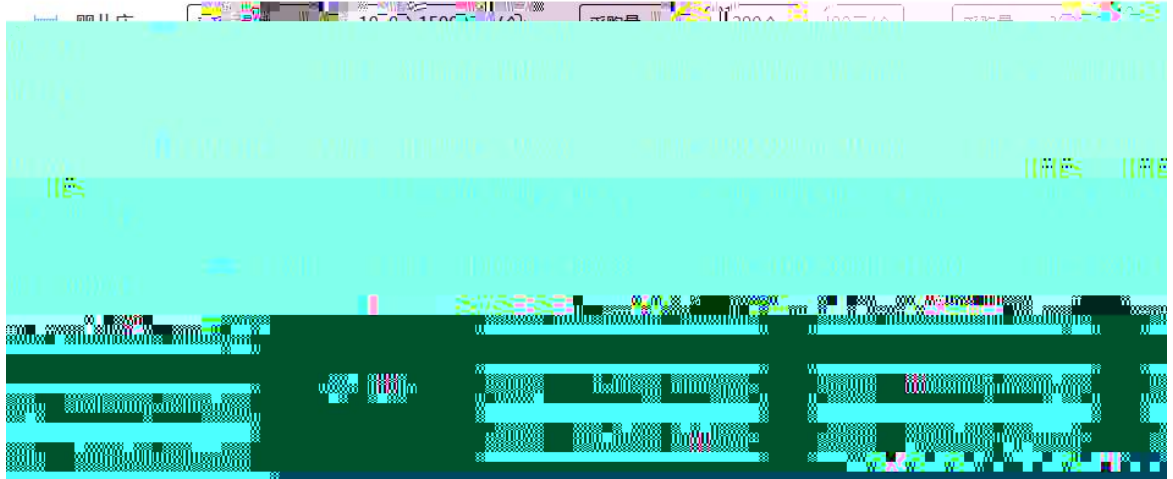
2

4

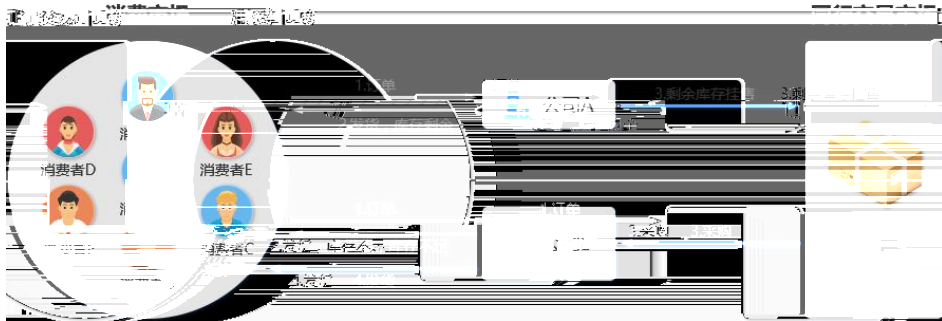
选品参考数据：市场交易热度

 圈越大表示该品类商品越热销





4



5

APP

6

200

2

	172. 16. 0. 131/	
		48
	3 1	

3

90

4

3-7

3-7

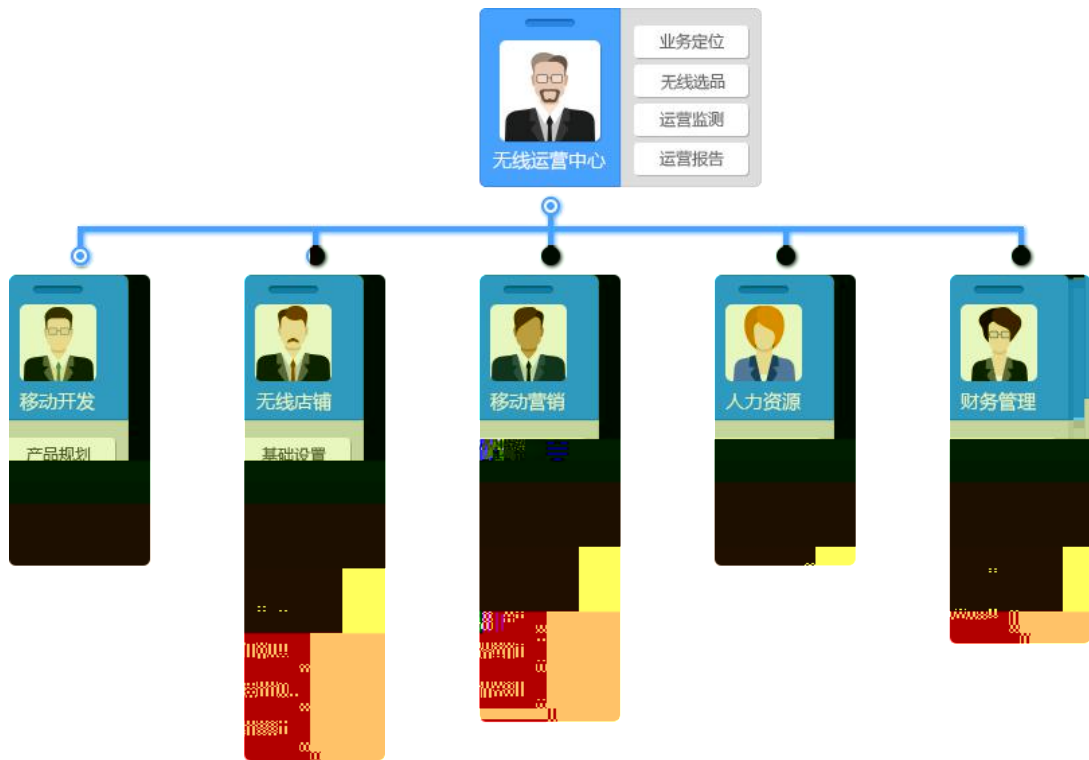
10	10	6S	
		3 /3 /4	
90			
		10	A 2 2 2 4
		10	5
			5
		10	5
			2
			3
	APP	15	5 10
		15	5 10
		10	5 5
	10	5 3 2	
	10	5 5	
	100		

8.

3-8

1
1

200



2

4

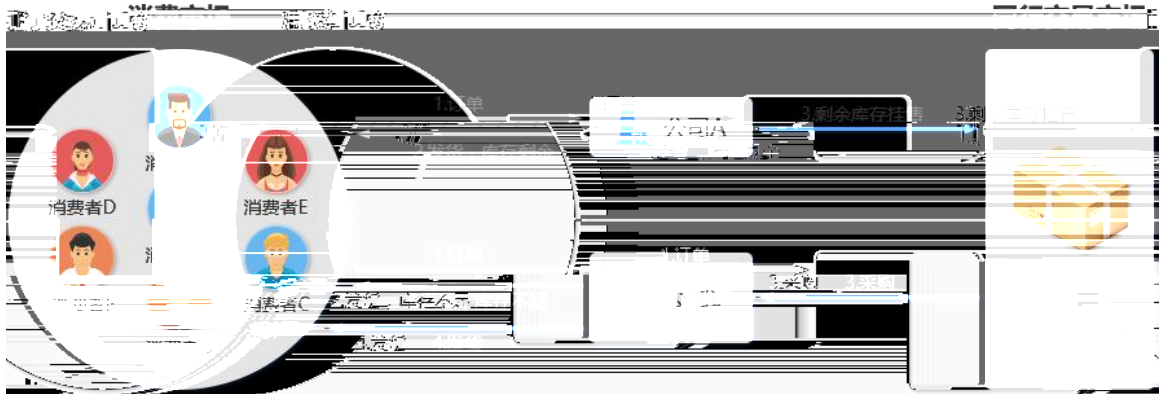
选品参考数据：市场交易热度

圈越大表示该品类商品越热销





4



5

APP

6

200

1

2

	172.16.0.131/	
	48	
	3 1	

3

90

4

3-8

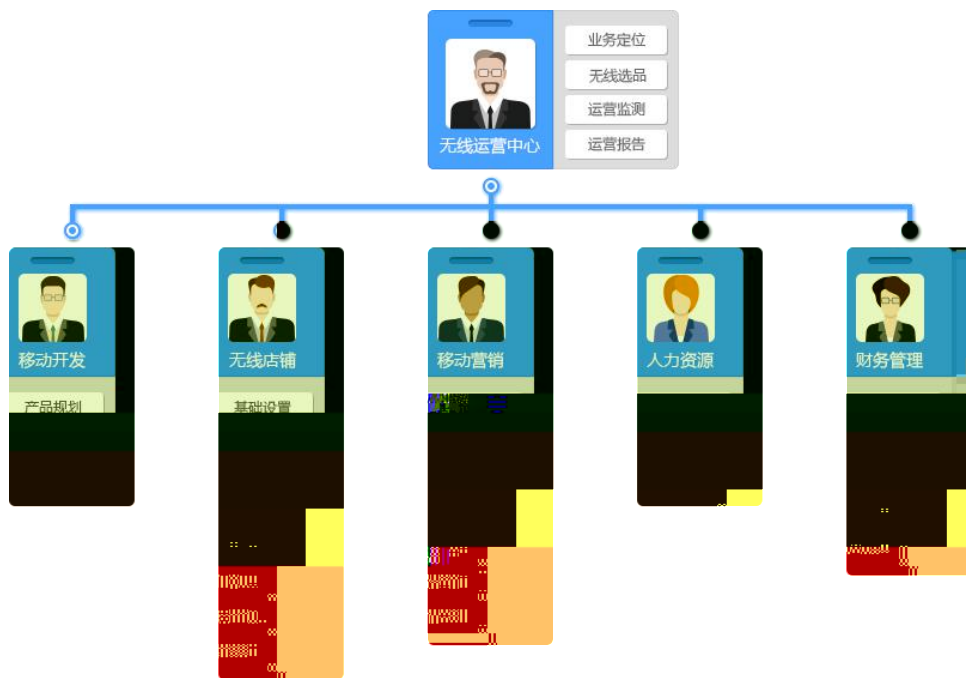
3-8

10	10	6S 3 /3 /4	
90			
		10	A 2 2 2 4
		10	5 5
		10	5 2 3
	APP	15	5 10
		15	5 10
		10	5 5
		10	5 3 2
		10	5 5
		100	

9. 3-9

1
1

200



2

4

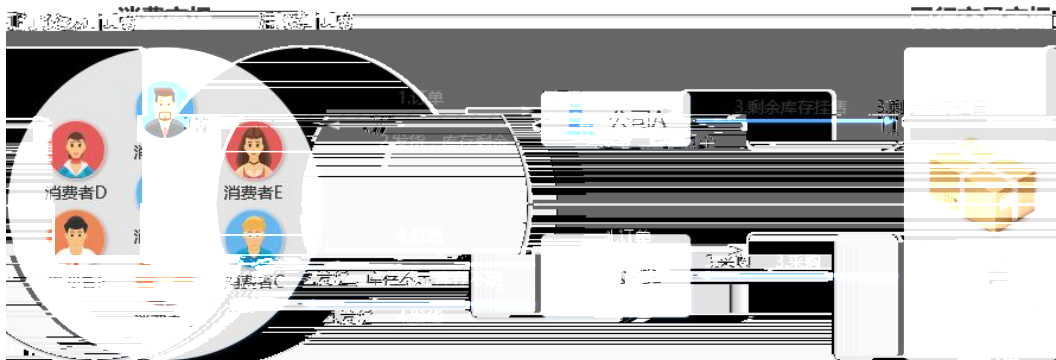
选品参考数据：市场交易热度

 圈越大表示该品类商品越热销



平板电脑	采购量 1-100个 5000元/个	采购量 101-200个 2990元/个	采购量 201-300个 2980元/个
	采购量 301-400个 2970元/个	采购量 401-500个 2960元/个	采购量 500个以上 2950元/个
笔记本电脑	采购量 1-100个 6000元/个	采购量 101-200个 5990元/个	采购量 201-300个 5980元/个
	采购量 301-400个 5970元/个	采购量 401-500个 5960元/个	采购量 500个以上 5950元/个
数码相机	采购量 1-1000个 200元/个	采购量 1001-2000个 195元/个	采购量 2001个以上 190元/个

4



5

APP

6

200

1

2

	172. 16. 0. 131/	
		48
		3 1

3

90

4

3-9

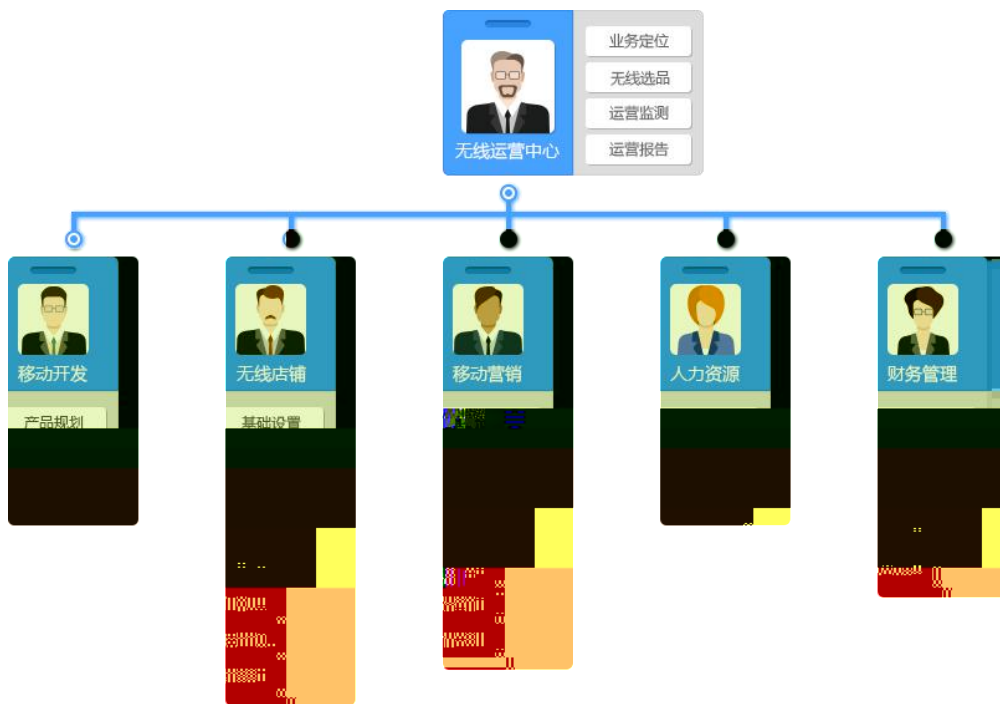
3-9

10	10		6S 3 /3 /4
90		10	A 2 2 2 4
		10	5 5
		10	5 2 3
	APP	15	5 10
		15	5 10
		10	5 5
		10	5 3 2
		10	5 5
		100	

10. 3-10

1
1)

200



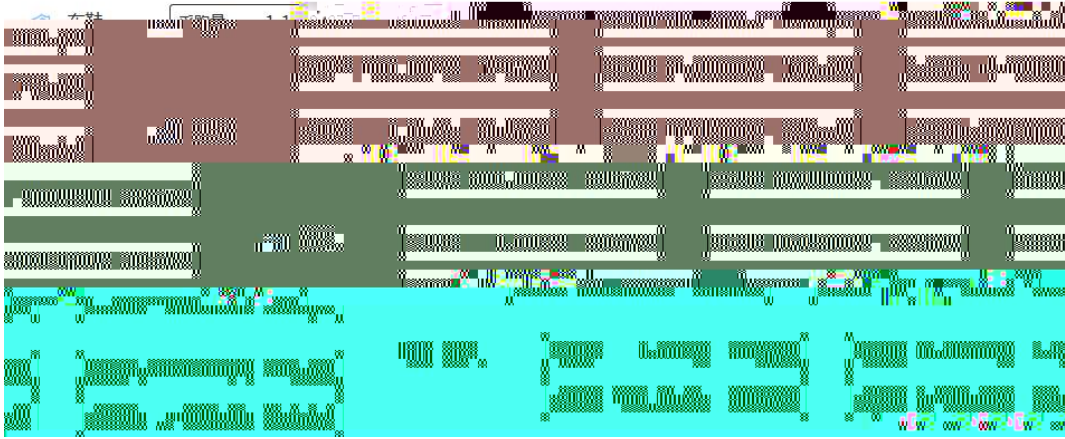
2)

4

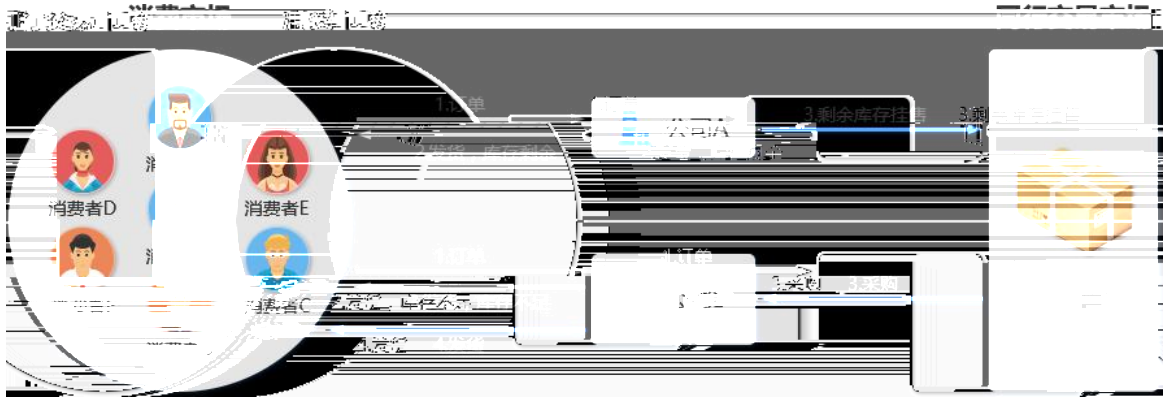
选品参考数据：市场交易热度

📌 圈越大表示该品类商品越热销





4)



5

APP

6

2

	172. 16. 0. 131/	
		48
		3 1

3

90

4

10	10	6S 3 /3 /4	
90	10	A 2 2 2 4	
	10	5 5	
	10	5 2 3	
	APP	5 10	
	15	5 10	
	10	5 5	
	10	5 3 2	
	10	5 5	
	100		

11.

(10)	10	/4 /6 /10	0
(90)	10	120*120	
		0 /4 /6 /8 /10	
	5	50	
		0 /1 /2 /3 /4 /5	
	5		
		0 /1 /2 /3 /4 /5	
	5	1 2	2
	20	150 618	
		0 /5 /10 /15/20	
	20	1	
	200		
	0 /5 /10 /15/20		
3G	5		
	20		
		0 /5 /10 /15/20	
	100		

12. 3-12

1

1

2

3

:

(10)	10	/4 /6 /10	0	
(90)	10	120*120 0 /4 /6 /8 /10		
	5	50 0 /1 /2 /3 /4 /5		
	5	0 /1 /2 /3 /4 /5		
	5	1 2	2	
		150 618 0 /5 /10 /15/20		
	20	1 200 0 /5 /10 /15/20		
	3G	5		
		20	0 /5 /10 /15/20	
	100			

13. 3-13

1

1

2

3 :

4

5 6.18 11

1

11 6.18

6

1

200

7 3G 10 3G

8

2

7 8 0 2007 P

CS6.0

GOOGLE48

://172.16.0.131/ /

3

(10)	10	/4 /6 /10	0	
(90)	10	120*120 0 /4 /6 /8 /10		
	5	50 0 /1 /2 /3 /4 /5		
	5	0 /1 /2 /3 /4 /5		
	5	1 2	2	
		150 618 0 /5 /10 /15/20		
	20	1 200 0 /5 /10 /15/20		
	3G	5		
		20	0 /5 /10 /15/20	
	100			

14. 3-14

1

1

2

3 :

4

5 6.18 11

1

11 6.18

6

1

200

7 3G 10 3G

8

2

7 8 0 2007 P

CS6.0 GOOGLE48

://172.16.0.131/ /

3

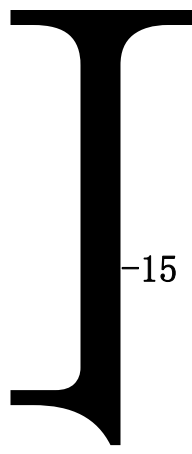
90

(10)	10	/4 /6 /10	0
(90)	10	120*120	
		0 /4 /6 /8 /10	
	5	50	
		0 /1 /2 /3 /4 /5	
	5		
		0 /1 /2 /3 /4 /5	
	5	1 2	2
	20	150 618	
		0 /5 /10 /15/20	
	20	1	
	200		
	0 /5 /10 /15/20		
3G	5		
	20		
		0 /5 /10 /15/20	
	100		

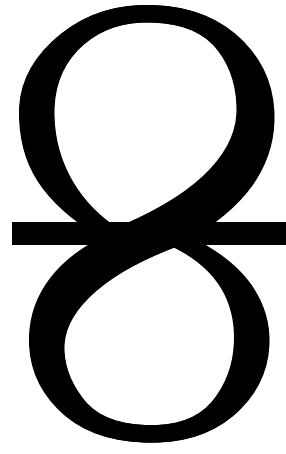
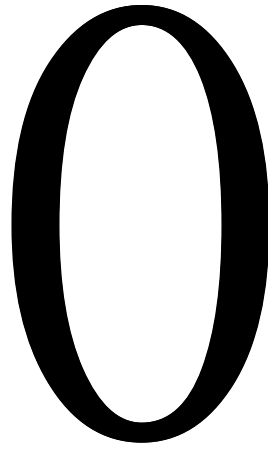


15.

1



-15



1

2

3

:

4

5

1

6.18

11

11

6.18

6

1

200

7 3G

10

3G

R1 A

2

7

8

0

2007

P

(10)	10	/4 /6 /10	0
(90)	10	120*120	
		0 /4 /6 /8 /10	
	5	50	
		0 /1 /2 /3 /4 /5	
	5		
		0 /1 /2 /3 /4 /5	
	5	1 2	2
	20	150 618	
		0 /5 /10 /15/20	
	20	1	
	200		
	0 /5 /10 /15/20		
3G	5		
	20		
		0 /5 /10 /15/20	
	100		

16. 3-16

1

1

2

3 :

4

5 6.18 11

1

11 6.18

6

1

200

7 3G 10 3G

8

2

7 8 0 2007 P

CS6.0

GOOGLE48

://172.16.0.131/ /

3

90

(10)	10	/4 /6 /10	0
(90)	10	120*120	
		0 /4 /6 /8 /10	
	5	50	
		0 /1 /2 /3 /4 /5	
	5		
		0 /1 /2 /3 /4 /5	
	5	1 2	2
	20	150 618	
		0 /5 /10 /15/20	
	20	1	
	200		
	0 /5 /10 /15/20		
3G	5		
	20		
		0 /5 /10 /15/20	
	100		

17. 3-17

1

1

2

3 :

4

5 6.18 11

1

11 6.18

6

1

200

7 3G 10 3G

8

2

7 8 0 2007 P

CS6.0 GOOGLE48

://172.16.0.131/ /

3

90

(10)	10	/4 /6 /10	0	
(90)	10	120*120 0 /4 /6 /8 /10		
	5	50 0 /1 /2 /3 /4 /5		
	5	0 /1 /2 /3 /4 /5		
	5	1 2 2		
	20	150 618 0 /5 /10 /15/20		
	20	1 200 0 /5 /10 /15/20		
	3G	5		
		20	0 /5 /10 /15/20	
		100		

18. 3-18

1

1

2

3 :

4

5 6.18 11

1

11 6.18

6

1

200

7 3G 10 3G

8

2

7 8 0 2007 P

CS6.0 GOOGLE48

://172.16.0.131/ /

3

90

(10)	10	/4 /6 /10	0
(90)	10	120*120	
		0 /4 /6 /8 /10	
	5	50	
		0 /1 /2 /3 /4 /5	
	5		
		0 /1 /2 /3 /4 /5	
	5	1 2	2
	20	150 618	
		0 /5 /10 /15/20	
	20	1	
	200		
	0 /5 /10 /15/20		
3G	5		
	20		
		0 /5 /10 /15/20	
	100		

19. 3-19

1

1

2

3 :

4

5 6.18 11

1

11 6.18

6

1

200

7 3G 10 3G

8

2

7 8 0 2007 P

CS6.0 GOOGLE48

://172.16.0.131/ /

3

90

(10)	10	/4 /6 /10	0
(90)	10	120*120	
		0 /4 /6 /8 /10	
	5	50	
		0 /1 /2 /3 /4 /5	
	5		
		0 /1 /2 /3 /4 /5	
	5	1 2	2
	20	150 618	
		0 /5 /10 /15/20	
	20	1	
	200		
	0 /5 /10 /15/20		
3G	5		
	20		
		0 /5 /10 /15/20	
	100		

20. 3-20

1

1

2

3 :

4

5 6.18 11

1

11 6.18

6

1

200

7 3G 10 3G

8

2

7 8 0 2007 P

CS6.0

GOOGLE48

://172.16.0.131/

/

3

90

(10)	10	/4 /6 /10	0	
(90)	10	120*120 0 /4 /6 /8 /10		
	5	50 0 /1 /2 /3 /4 /5		
	5	0 /1 /2 /3 /4 /5		
	5	1 2	2	
	20	150 618 0 /5 /10 /15/20		
	20	1 200 0 /5 /10 /15/20		
	3G	5		
		20	0 /5 /10 /15/20	
		100		

1. 4-1

1

1

7

1000

.

.

2010 4

5000

+

+

+

2

a.

b.

50

c.

10

d.

50

1		

e.

100

1		
2		
3		

f.

400

1			
2			
3			

g.

h.

3

2

7 8 0 2007 H S

3

60

4

(4-1)

4-1

	10	6S 0 /3 /5 0 /3 /5	
	5		
	5	1	10
	5	2 1	
	5		2
	10	3 10 1	
	10	4 6 20	
	40	1	
	40	4 36	
	10	40 1	
	10		2
		8	
	10		2 8
	100		

2.

4-2

1

1

www.168gld.com

1997 3 20

500

2017

2500

2

d.

50

1		

e.

100

1		
2		
3		

f.

400

1			
2			
3			

g.

h.

3

2

3

60

4

(4-2)

4-2

	10	6S 0 /3 /5 0 /3 /5	
	5		
	5	1	10
	5	2 1	
	5		2
	10	1	3 10 1
	10	1	4 6 20
	40	40 1	4 36
	10		2
10		8	
10		2 8	
	100		

3. 4-3

1
1

www.hnaijia.cn

1200

2014 03 18

49

17

4508

2

a.

b.

50

c.

10

d.

50

1		

e.

100

1		

2		
3		

f.

400

1			
2			
3			

g.

h.

3

2

7 8 0 2007 H S

3

60

4

(4-3)

4-3

	10	6S 0 /3 /5 0 /3 /5	
	5		
	5	1	10
	5	2 1	
	5		2
	10	1	3 10 1
	10	1	4 6 20
	40	40 1	4 36
	10		2
10		8	
10		2 8	
	100		

4. 4-4

1
1

www.hnxffs.com

1996

AAA	2011		21
		58	5088
336		35	50
			66
20		165	

	CAD	2	6
	7		
41			

	1996	
2008	ISO9001	ISO14001
2011		
()		

2

a.

b.

50

c. 10

d.

50

1		

e.

100

1		
2		
3		

f.

400

1			
2			
3			

g.

h.

3

2

7 8 0 2007 H S

3

60

4

(4-4)

4-4

	10	6S 0 /3 /5 0 /3 /5	
	5		
	5	1	10
	5	2 1	
	5		2 3 10 1
	10	1	4 6 20
	40	40 1	4 36
	10		2 8
	10		2 8
	100		

5. 4-5

1
1

www.cschanglong.com 1985
2007

2007
A 2008
2012

2011 fs.changsha.cn
2012

2

a.

b.

50

c.

10

d.

50

1		

e.

100

1		
2		
3		

f.

400

1			
2			
3			

g.

h.

3

2

3

60

4

(4-5)

4-5

	10	6S 0 /3 /5 0 /3 /5	
	5		
	5	1	10
	5	2 1	
	5		2
	10	1	3 10 1
	10	1	4 6 20
	40	40 1	4 36
	10		2
10		8	
10		2 8	
	100		

6. 4-6

1
1

<http://www.and169.com>

2006

5000

2

a.

b.

50

c.

10

d.

50

1		

e.

100

1		
2		
3		

f.

400

1			
2			
3			

g.

h.

3

2

7 8 0 2007 H S

3

60

4

(4-6)

4-6

	10	6S 0 /3 /5 0 /3 /5	
	5		
	5	1	10
	5	2 1	
	5		2
	10	3 10 1	
	10	4 6 20	
	40	1	
	40	4 36	
	10	40 1	
	10		2
		8	
	10		2 8
	100		

7. 4-7

1
1

<http://www.csqstx.com>

-

2

a.

b.

50

c.

10

d.

50

1		

e.

100

1		
2		
3		

f.

400

1			
2			
3			

g.

h.

3

2

7 8 0 2007 H S

3

60

4

(4-7)

4-7

	10	6S 0 /3 /5 0 /3 /5	
	5		
	5	1	10
	5	2 1	
	5		2
	10	3 10 1	
	10	4 6 20	
	40	1	
	40	4 36	
	10	40 1	
	10		2
		8	
	10		2 8
	100		

8. 4-8

1
1

<http://www.cstycb.com>

2016

10

2

a.

b.

50

c.

10

d.

50

1		

e.

100

1		
2		
3		

f.

400

1			
2			
3			

g.

h.

3

2

7 8 0 2007 H S

3

60

4

(4-8)

4-8

	10	6S 0 /3 /5 0 /3 /5	
	5		
	5	1	10
	5	2 1	
	5	3 10 1	2
	10	4 6 20	1
	40	40 4 1 36	
	10	8	2
	10	2 8	
	100		

9. 4-9

1
1

2016 3 22

3000

20

2

a.

b.

50

c.

10

d.

50

1		

e.

100

1		
2		
3		

f.

400

1			
2			
3			

g.

h.

3

2

7 8 0 2007 H S

3

60

4

(4-9

4-9

	10	6S 0 /3 /5 0 /3 /5	
	5		
	5	1	10
	5	2	1
	5	2	3 10 1
	10	20 1	4 6
	40	40 1	4 36
	10		8 2
	10		2 8
	100		

10. 4-10

1
1

www.bidanxi.com 2010 2012

3

21

50

2

a.

b.

50

c.

10

d.

50

1		

e.

100

1		
2		
3		

f.

400

1			
2			
3			

g.

h.

3

2

7 8 0 2007 H S

3

(4-10)

4-10

	10	6S 0 /3 /5 0 /3 /5	
	5		
	5	1	10
	5	2 1	
	5	2 3 10 1	
	10	20 1 4 6	
	40	40 1 4 36	
	10	8 2	
	10	2 8	
	100		

1. 5-1

1

1

58

1150 520 76900 9 30-
12 30 14 00-18 30 19 30-23 00

2

3

2

7 8 0 2010

3

60

4

(5-1)

5-1

10	10	◆	5	600	
		◆	20 1		
			5		
	10	◆		2	1.
		◆		2	200
		◆		3	1
		◆	3		2.
	20	◆	5	4	30000 1
			1.	2	3
			2.		20
			10	2	1
			20		4.
90	40	◆	10		35
		◆		10	5.
		◆	10		
		◆		10	
		◆			1
			1-4		
	20	◆	4		
			1	5	20
			100		

2. 5-2

1

1

68

780

405

77030

9 30-12 00 13 00-18:00 19:00- 22 30

2

:

2

7 8 0 2010

3

60

4

(5-2)

5-2

10	10	◆	5	600	
		◆	20 1		
			5		
	10	◆		2	1.
		◆		2	
		◆			200
		◆		3	1
			3		2.
	20	◆	5	4	30000 1
			1.	2	3
			2.		20
			10	2	1
			20		4.
90		◆	10		35
		◆		10	5.
	40	◆	10		
		◆		10	
		◆			1
			1-4		
	20	◆	4		
				1 5 20	
			100		

3. 5-3

1

1

48

980

268

300000

10 00-14 00 16 00-23 00

2

:

2

7 8

0 2010

3

60

4

(5-3)

5-3

10 10 20 1 5 600

◆

◆

5

1. 200

1

2.

30000 1

3

20

1

4.

35

5.

1

e

Abby

10

! v t #

B \$

4. 5-4

1

1

68

1600

560

38900

8 30-12 00 14 00-17

30 18 30-22 30

2

:

2

7 8 0 2010

3

60

4

(5-4)

5-4

10	10	◆	5	600	
		◆	20 1		
			5		
	10	◆		2	1.
		◆		2	200
		◆		3	1
		◆	3		2.
		◆	5	4	30000 1
	20	1.	2		3
		2.			20
		10	2		1
		20			4.
90		◆	10		35
		◆		10	5.
	40	◆	10		
		◆		10	
		◆			1
			1-4		
	20	◆	4		
			1 5 20		
			100		

5. 5-5

1

1

T

145

1500

732

13500

9 30-12 30 14 00-18 30 19 30-23

00

2

:

2

7 8

0 2010

3

60

4

(5-5)

5-5

10	10	◆	5	600	
		◆	20 1		
			5		
	10	◆		2	1.
		◆		2	200
		◆		3	1
		◆	3		2.
		◆	5	4	30000 1
	20	1.	2		3
		2.			20
		10	2		1
		20			4.
90		◆	10		35
		◆		10	5.
	40	◆	10		
		◆		10	
		◆			1
			1-4		
	20	◆	4		
			1 5 20		
			100		

6. 5-6

1

1

2004

200

980

125

215000

9 30-12 30 14 00-18 30 19 30-23 00

2

:

2

7 8 0 2010

3

60

4

(5-6)

5-6

10	10	◆	5	600	
		◆	20 1		
			5		
90	10	◆		2	1.
		◆		2	200
		◆		3	1
		◆	3		2.
	20	◆	5	4	30000 1
			1.	2	3
			2.		20
			10	2	1
			20		4.
	40	◆	10		35
		◆		10	5.
		◆	10		
		◆		10	
		◆			1
			1-4		
	20	◆	4		
			1	5	20
			100		

7. 5-7

1

1

65

780

110

340000

10 00-14 00 16 00-23 00

2

:

2

7 8

0 2010

3

60

4

(5-7)

5-7

10	10	◆	5	600	
		◆	20 1		
			5		
	10	◆		2	1.
		◆		2	200
		◆		3	1
		◆	3		2.
		◆	5	4	30000 1
	20	1.	2		3
		2.			20
		10	2		1
		20			4.
90		◆	10		35
		◆		10	5.
	40	◆	10		
		◆		10	
		◆			1
			1-4		
	20	◆	4		
			1 5 20		
			100		

8. 5-8

1

1

170

260

870

26100

9 30-12 00 13 00-18:00 19:00- 22 30

2

:

2

7 8

0 2010

3

60

4

(5-8)

5-8

10	10	◆	5	600	
		◆	20 1		
			5		
	10	◆		2	1.
		◆		2	200
		◆		3	1
		◆	3		2.
	20	◆	5	4	30000 1
			1. 2		3
			2.		20
			10 2		1
			20		4.
90	40	◆	10		35
		◆		10	5.
		◆	10		
		◆		10	
		◆			1
			1-4		
	20	◆	4		
			1 5 20		
			100		

9. 5-9

1

1

80

980

280

52750

10 00-14 00 16 00-23

00

2

:

2

7 8

0 2010

3

60

4

(5-9)

10. 5-10

1

1

78

170

240

15600

8 30-12 00 14 00-17 30 18

30-22 30

2

:

2

7 8

0 2010

3

60

4

(5-10)

5-10

10	10	◆	5	600	
		◆	20 1		
			5		
	10	◆		2	1.
		◆		2	200
		◆		3	1
		◆	3		2.
	20	◆	5	4	30000 1
			1. 2		3
			2.		20
			10 2		1
			20		4.
90	40	◆	10		35
		◆		10	5.
		◆	10		
		◆		10	
		◆			1
			1-4		
	20	◆	4		
			1 5 20		
			100		

